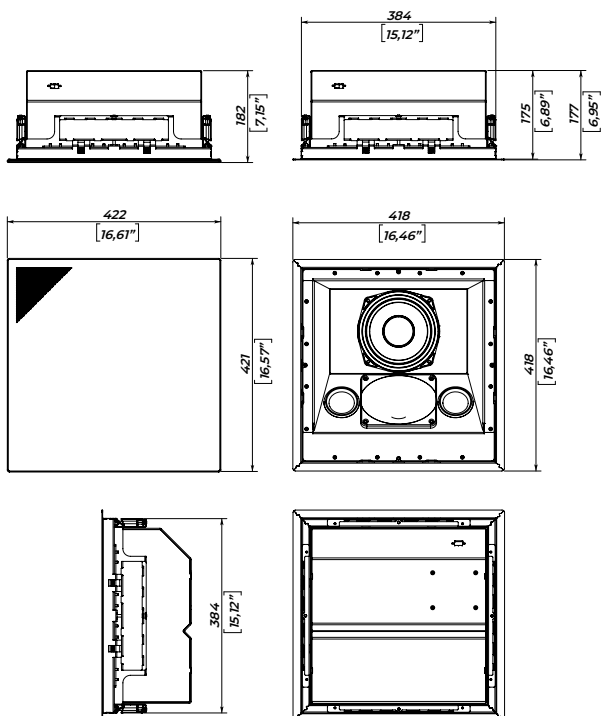


CS-6

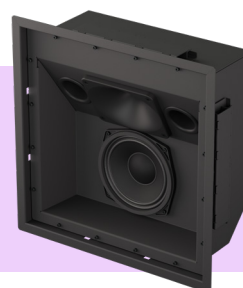
In-surface surround

The CS-6 is the ultimate, perfectly aimed yet discreet surround speaker, designed for seamless installation into walls or ceilings. Boasting a long-excursion 6" woofer and a horn-mounted high-frequency driver, this speaker promises unmatched audio performance. Thanks to its 30° tilted sound axis, the CS-6 is the perfect choice for top frontal surround or high-side surround positions.



SAFETY INSTRUCTIONS

1. Keep liquids, direct sunlight, open flames, and heat sources away from the speaker system to prevent damage or failure.
2. Avoid using the system with damaged connectors or cables to prevent electrical shock or fire hazards.
3. Ensure the speaker is securely positioned on a stable surface (floor, stage, or wall).
4. On angled or slippery surfaces, secure the system to prevent movement caused by vibration.
5. Limit exposure to sound levels above 90 dB to prevent potential hearing damage.
6. Use a high-pass filter (HPF) to eliminate low, non-audible frequencies and avoid speaker damage and sound distortion.
7. Do not exceed the input power ratings specified to ensure safe and reliable operation of the speaker system.



SPECIFICATIONS

Frequency range (-10 dB)	90 - 18000 Hz
Max continuous SPL	15,5 dB
Sensitivity (1W/1m half-space)	94 dB
LF Driver	6", 1,75" VC
HF Driver	1", 1" VC
Coverage	80° x 60°
Front panel tilt angle	30°
Nominal impedance	4 Ohm
Power rating	150 W
Mounting	Built-in mounting frame
Dimension (W x H x D)	422 x 422 x 182 mm (w/ grill)
	418 x 418 x 177 mm (w/o grill)
Net weight	8,6 kg

¹ - dBSPL, IEC 60268-5 pink noise, 1W / 1m, half- and free- space

² - dBSPL RMS, IEC 60268-5 pink noise, measured on nominal power

³ - 2 hour power test, IEC filtered noise, 6 dB crest factor