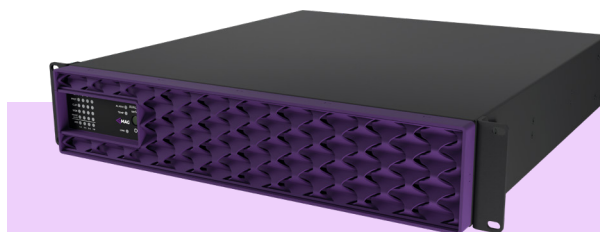


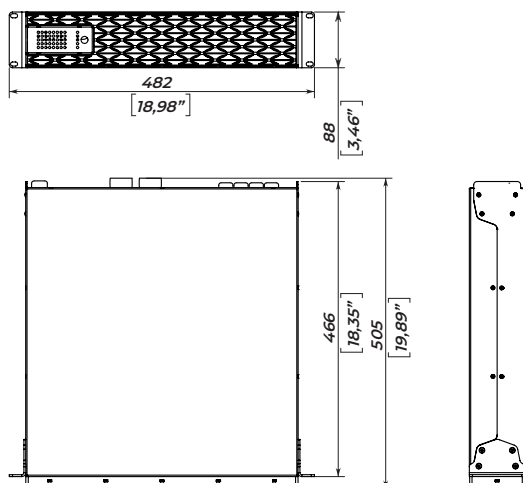
AVALON SUB AMP

DSP amplifier

The AVALON Amp epitomizes unparalleled sound power delivery, merging noise-free, energy-efficient Class D amplification with next-generation DSP technology, elevating it to the echelon of the finest cinema amplifiers. With 48-bit/96 kHz FIR processing, the AVALON Amp unlocks the full potential of your AVALON Ultimate Screen Array, offering an auditory experience that is nothing short of exceptional.



SPECIFICATIONS



SAFETY INSTRUCTIONS

1. Do not use this equipment near water.
2. Clean only with dry cloth.
3. Do not block any ventilation openings. Install in accordance with the manufacturer's instructions.
4. Do not use near heat sources such as stoves, heat registers, radiators or other equipment (including amplifiers) that produces heat.
5. Do not use the unit near open fire sources.
6. Connect the unit only to the electric network with grounding. Use only electric plugs that provide grounding.
7. Protect the power cord from being walked on, pinched, or otherwise damaged.
8. Use only accessories specified by the manufacturer.
9. Unplug this unit during lightning storms or when unused for long periods of time.
10. Refer all servicing to qualified service personnel. Servicing is required when the system has been damaged in any way, such as power supply cord or plug is damaged, liquid has been spilled or objects have fallen into the unit, the unit has been exposed to rain or moisture, does not operate normally, or has been dropped.
11. WARNING - TO REDUCE THE RISK OF FIRE OR ELECTRIC SHOCK, DO NOT EXPOSE THIS SYSTEM UNIT TO RAIN OR MOISTURE.

Frequency range	16 Hz - 24 kHz
Output channels	1 x AVALON SUB
Amplifier	Class D high efficiency
Web UI	Theatron Web UI
DSP	24 bit, 96 kHz, FIR
Input sensitivity	+16 dBu / +4 dBu
Maximum input level	+22 dBu / +10 dBu
Input impedance	10 kOhm unbal., 20 kOhm bal.
Crosstalk separation	100 dB @ 1 kHz
THD	< 0,5%
Power consumption, 1/8 of max output power @ 8 Ohm	1000 VA
Damping factor, 8 Ohm	> 500 @ 100 Hz
S/N ratio	108 dB
Connectors	4 x XLR bal. input, 1 x 4-pin Phoenix speaker terminal, RJ-45 Ethernet, RJ-45 AES3 input, 2 x 3,5" TRS trigger in/out
Dimensions (W x H x D)	486 x 87 x 505 mm, 2U
Net weight	9,3 kg